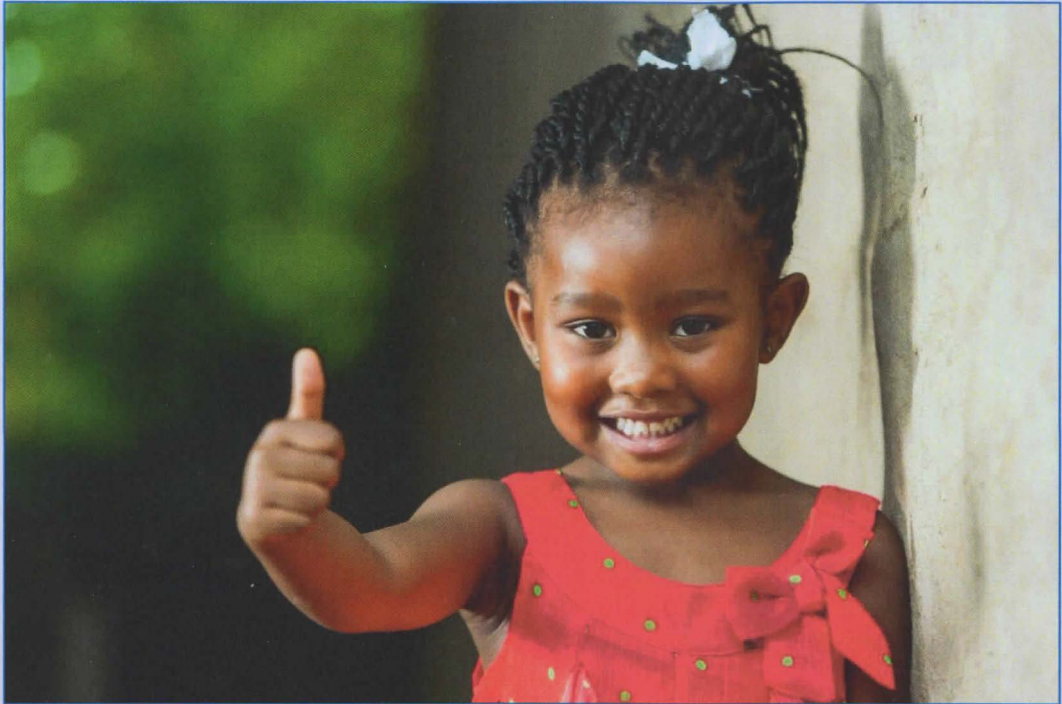




Royal Marange Clan, Zimbabwe, Africa



FOR THE SAKE OF PEOPLE'S WELFARE AND A BETTER FUTURE IN THE  
MARANGE-CHIADZWA AREA:

## RED MERCURY T/A ROYAL MARANGE 10 YEAR MASTER PLAN 2017 – 2027:

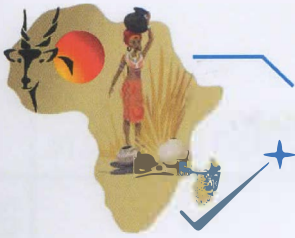
- fundamental improvement of health care and conditions of life
- environmental protection and reconstruction, agricultural development
- preservation of old traditions and customs and imparting them to our descendants and interested fellowmen
- investment in sustainable projects in other regions and abroad in order to create continuous revenue for the Marange-Chiadzwa people



Representatives of the Traditional House of Leaders from left to right:  
Chief Engineer Godfrey Taapano Marange, Chairperson  
Ishe Rodwell Marange, Deputy Chair Person  
Ishe Newman Chiadzwa, Secretary

## TABLE OF CONTENT

Objectives	3
Some Words about Environmental Friendly Mining with Rehabilitation	4
Community Health and Service Facilities	5
Agricultural Programs	14
Cultural and Community Services Programs: Marange Museum and Musical	18



## Objectives

The mining and commercial activities of Red Mercury shall serve as instrument for the:

- elimination of poverty
- diversification of income sources
- provision of education to everybody
- emplacement of appropriate healthcare
- establishment of sustainable living conditions and a healthy and vital environment

in order to create the foundation for a long-lasting prosperity for the Marange-Chiadzwa community and the people in the entire country as well.

Within the scope of its superior objectives Red Mercury has set up this Master Plan to be implemented in the coming 10 years.

As a start, the **Master Plan** is focusing on the following **priorities**:

- **Community Health and Service Facilities**
- **Agricultural Programs**
- **Cultural and Community Services Programs:**  
**Royal Marange Museum and Musical**

Subsequently, with rising returns, investments in other suitable projects like sustainable tourism or acquisition of equity in other companies shall follow. E. g. it is considered to invest in a nature conservation and sustainable tourism project in Mauritius (protection of the coral reefs and establishing a fleet of glass bottom boats) and into game reserves in Zimbabwe, to preserve the Zimbabwean wildlife and to attract more tourists into the country.

**This Master Plan, drawn up at the very beginning of the seminal undertaking, will be revised and substantiated on a regular basis, especially with regard to the implementation schedules for the various measures, to guarantee utmost transparency and checkability at any time.**





## Some Words about Environmentally Friendly Mining with Rehabilitation

Diamond mining will serve as the key to a better future for the Marange-Chiadzwa community, but, mining in its nature is a very wasteful business. It destroys and pollutes the environment. Therefore it is necessary to use the most gentle mining techniques possible and to rehabilitate/recultivate the mining areas after mining has been finished, in order not to leave behind dead and contaminated wasteland, as it has been done by the players in the mining business in recent years. To rehabilitate these areas - the heritage of irresponsible and greedy mining companies – for our people and the wildlife will constitute one of the urgent challenges for Red Mercury.



Guide for the project in the Marange-Chiadzwa area is a GTZ (today known as GIZ) funded, successfully implemented project based on a mining technique dubbed “Alluvial Deposits Environmentally Friendly Mining With Rehabilitation” which was developed by Chief and Mining Engineer Godfrey Marange in collaboration with the University of Zimbabwe, Professor Jürgen Voss. The project won a World Bank and United Nations recognition for its relevance not only in environmentally friendly mining with rehabilitation but also in contributing towards poverty eradication and long term community rural development. The pilot project was successfully implemented in Filabusi. During the implementation the project was focusing on transforming artisanal gold panners into environmentally conscious gold miners, where rivers were desilted and simultaneously reconstructing river banks whilst recovering the gold dust without the use of mercury. The resultant water was used to irrigate commercial crops for both local and international markets.





## Community Health and Service Facilities

Zimbabwe's health service delivery has suffered seriously as a result of the country's economic collapse. Numerous health facilities have closed, or provide only limited services and face a lack of health commodities for treatment. The Zimbabwe government's investment in the health sector has been inadequate. More than 11 million Zimbabweans, representing 90 % of the population have no access to medical aid. The infant mortality rate (57/1,000) as well as maternal mortality rate (960/100,000) are among the highest in the world.

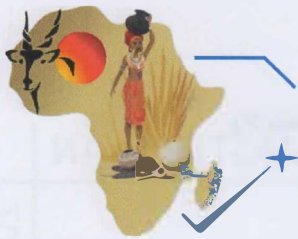


**The installation of an appropriate healthcare system, thus, is one of the top priorities of this Master Plan,** especially as the various impacts of mining, e. g. the contamination of water sources, have caused substantial health issues to both, the community people and their livestock.

It is scheduled to provide each of the 156 community villages with a clinic, amongst them one mining workers clinic, slightly bigger and with some equipment for emergency cases. The clinics will be integrated into so called 'Community Life Hubs', centers providing not only health care but also other essential services and facilities. The Community Life Hubs shall serve as midpoint for community life and as meeting point for young and old. As it will take several years to furnish all the 156 villages with a clinic/Community Life Hub, mobile units (trucks) will be used to bring medical care to the villages during the transition period. To complete the package, 7 District Hospitals and 1 General Hospital should come into existence in suitable locations.

**Partner** for the realization of the Community Life Hubs and hospitals will be the German company **MMM Health Care International GmbH (MMM-HCI)**. MMM Group is one of the world's leading suppliers of complete systems and tailor-made solutions in the field of sterile good processing. Since its foundation in 1954, the company has been owned and strategically managed by the founding family and is internationally well known as a **reliable, predictable and long standing partner to the customers**. MMM-HCI was established more than 15 years ago as a department for turnkey solutions and focuses on the construction or refurbishment of complete hospitals. It **bundles the experiences and competences required, to plan and realize hospital solutions**. Chief and Engineer Godfrey Marange has worked with MMM Group for more than ten years. During this time, a **trusted long-term relationship has been developed**.

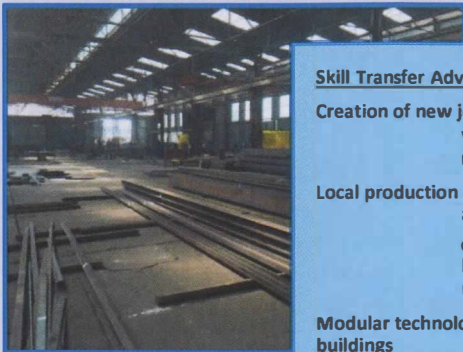




MMM-HCI offers a **modular building technology**, which is relatively faster than traditional brick and mortar, e. g. a district hospital can be constructed within six months where it would otherwise take more than one year to complete.



MMM-HCI also allows a **skill-transfer** for the modular building technology. Thus, construction plants for the modular buildings may be established locally, which benefits the domestic economy, reduces costs and creates jobs for native people.



**Skill Transfer Advantages:**

**Creation of new jobs**

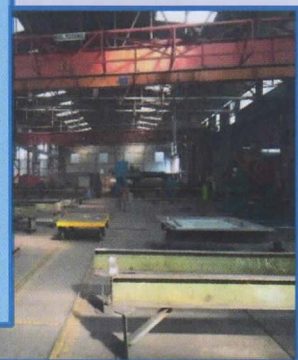
welders, carpenters, electricians,  
management, administration etc.

**Local production**

added value  
other German companies might also  
be interested in skill transfer (window  
manufacturers, door producers etc.)

**Modular technology can be used for different types of  
buildings**

- schools
- private homes
- hotels etc.



Red Mercury has already signed a skills transfer contract with MMM-HCI covering not only the Marange area but also Zimbabwe in its entity.

Additionally a Memorandum of Understanding has been signed with Louwill-Lefa, Springs, South Africa, in order to spread the modular building technology into other African markets as well.



## Outline on the New Health System in the Marange-Chiadzwa Area

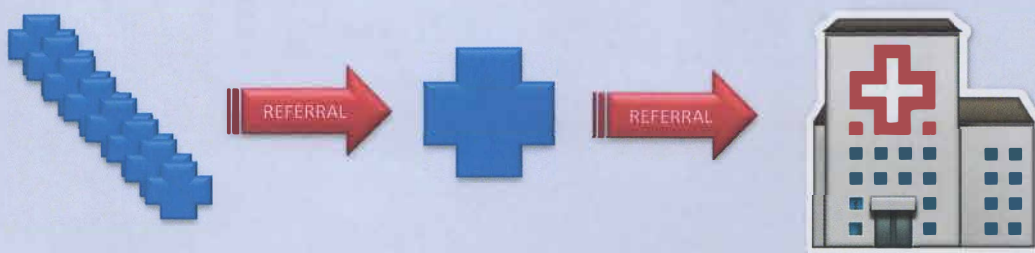
### General Structure

The new health care system in the Marange-Chiadzwa area will be a three step system:

156 CLINICS (integrated into the Community Life Hubs)

7 DISTRICT HOSPITALS

1 GENERAL HOSPITAL



### Features:

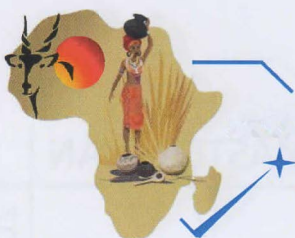
All clinics and all district hospitals will have

- an identical building size (clinics 200 m<sup>2</sup>, district hospitals 3.000 m<sup>2</sup>)
- identical rooms
- standardized equipment

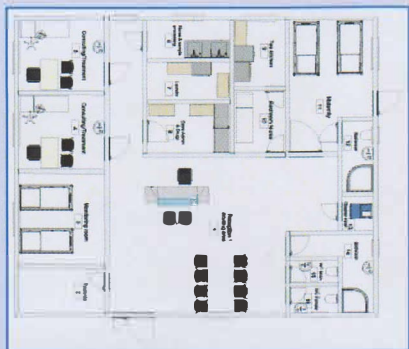
### Advantages:

- standardized training
- same spare parts
- effective service/maintenance
- less running costs

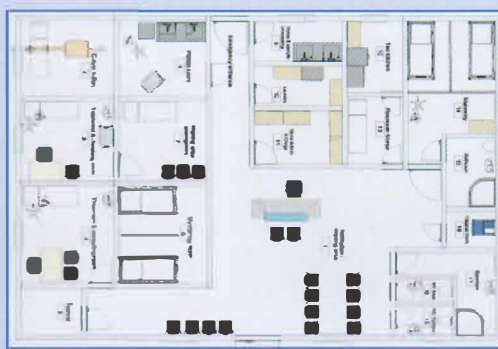
= basis for a sustainable operation of the clinics and hospitals



## 156 Clinics for primary health care - integrated into the Community Life Hubs



Standard Clinic



Mining Workers' Clinic  
with emergency unit for mining accidents



### Services provided:

- health education/prevention
- maternal and child health care
- immunization against major infectious diseases
- appropriate treatment of common diseases and injuries
- provision of essential drugs
- casualty care facility (Mining Workers' Clinic only)

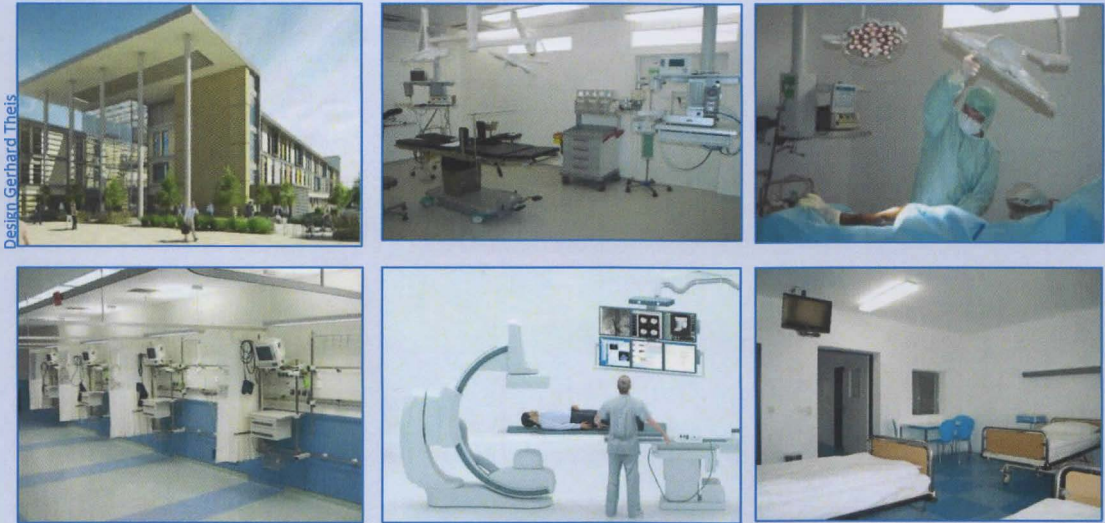
### Layout:

- treatment/consultation rooms
- maternity unit with private access and bathroom
- monitoring room
- kitchenette
- drug storage
- nurse room/ sample processing
- laundry
- emergency unit with plaster room and X-ray (Mining Workers Clinic only)





## 7 District Hospitals



The District Hospitals serve as referral hospitals for the Village Clinics (catchment population approx. 30.000 – 50.000 people) and have preventive, promotive and curative functions. They offer more specialized medical services and may handle e.g. high-risk deliveries, grave cases of childhood illness, complicated cases of malaria etc.

They are furnished with facilities like:

- units for inpatient care
- operation theatres
- intensive care units
- radiology
- pharmacy
- laboratory
- dental department
- ophthalmological department
- infectious diseases department

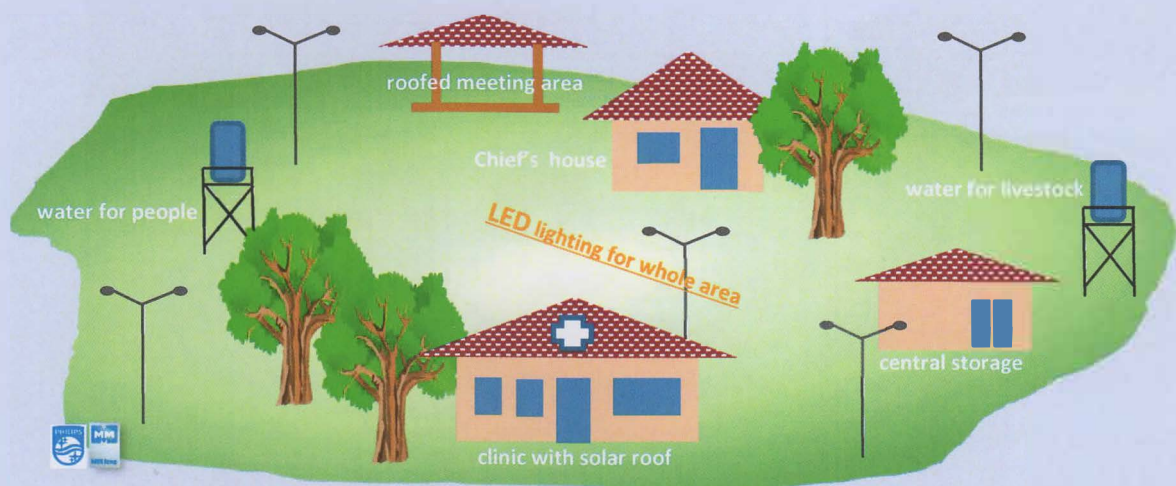
## 1 General Hospital (300-500 beds)

The General Hospital serves as referral hospital for the District Hospitals and offers a wide range of highly specialized medical services to the patients, e. g. orthopaedics, paediatrics, ante-, post- and neonatal care, cancer management etc. It is also furnished with an emergency unit.





### 156 Community Life Hubs



Each village shall have its own Community Life Hub, constituting the center of village life and offering some essential services to the village people. The hubs comprise:

- the chief's house
- a roofed meeting area
- a clinic offering primary health care services
- an appropriate storage facility for agricultural goods surmounting the peoples individual demand and to be offered for sale to the public
- one borehole for the community people
- one borehole for the livestock
- waste management facilities

The whole area will be enlightened by LED lights. Electrical power will be primarily generated via solar cells on the clinic roof, supported by a generator if necessary, which means, that the meeting area may also be used after nightfall, e. g. by children for doing their school work.





### Mobile Units for Medical Care in the Villages



In order to guarantee, that during the transition period until all villages will have been furnished with a clinic/Community Life Hub, people will have access to basic medical care, trucks will be provided, that will visit the villages at regular intervals. The trucks are furnished with all necessary equipment to render adequate primary health care.

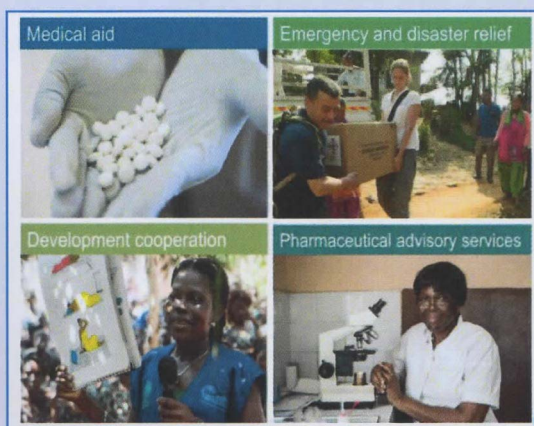
### Cooperation with



Red Mercury seeks a co-operation with action medeor, a well-respected German non-profit organization, which works for a better and sustainable health care worldwide. Discussions with action medeor have already taken place and a respective Memorandum of Understanding is in preparation.

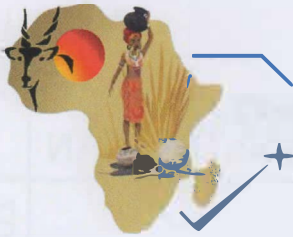
Action medeor works in the field of:

benefit of a co-operation:

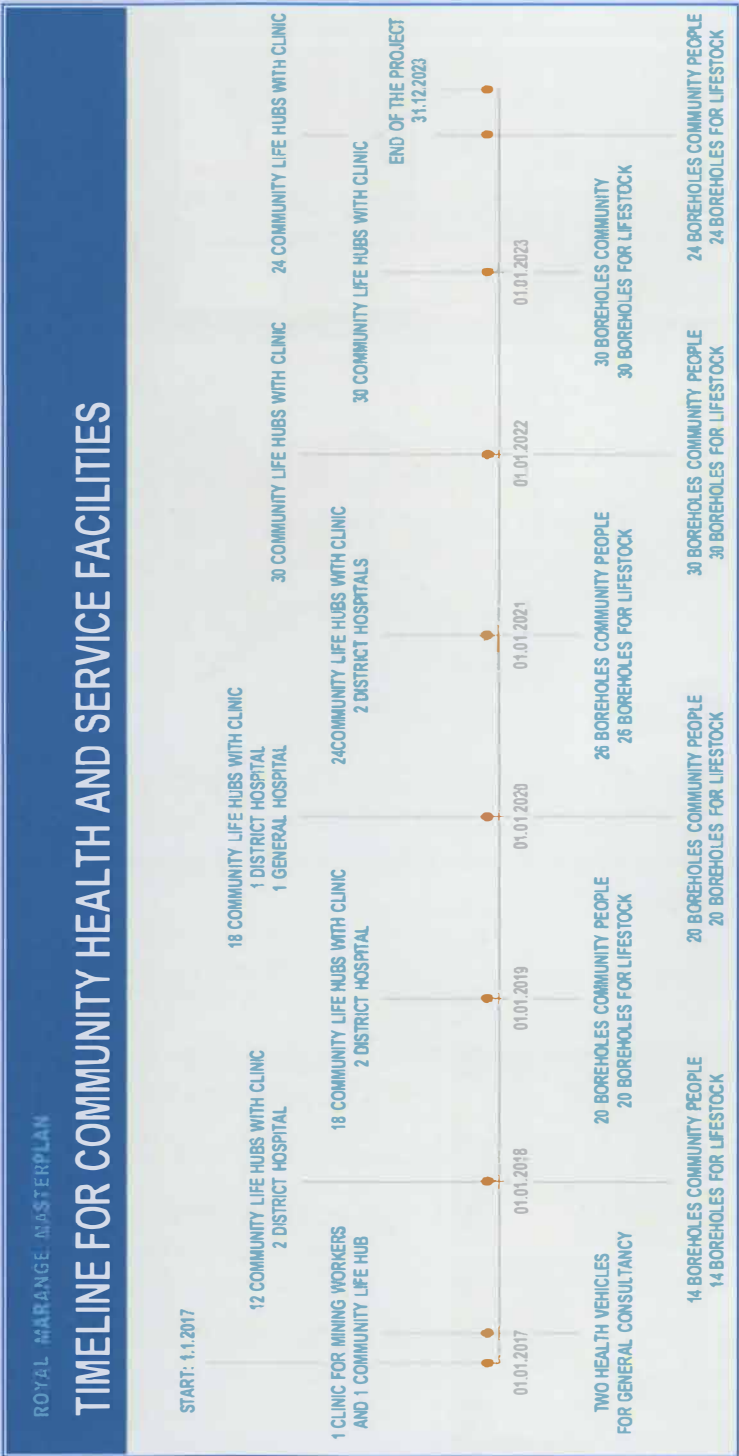


- drugs as well as a variety of medical consumables for the clinics and hospitals can be obtained at cost price
- action medeor offers profound support and advice with regard to adequate procurement, quality, storage and distribution of drugs





Implementation Schedule for Community Health and Service Facilities





Royal Marange Clan, Zimbabwe, Africa

MASTER PLAN

2017-2027



FOR A BETTER HEALTH CARE IN THE MARANGE-CHINDZWA AREA AND THE ENTIRE NATION



Agricultural Programs

Present Situation in the Marange-Chiadzwa Area

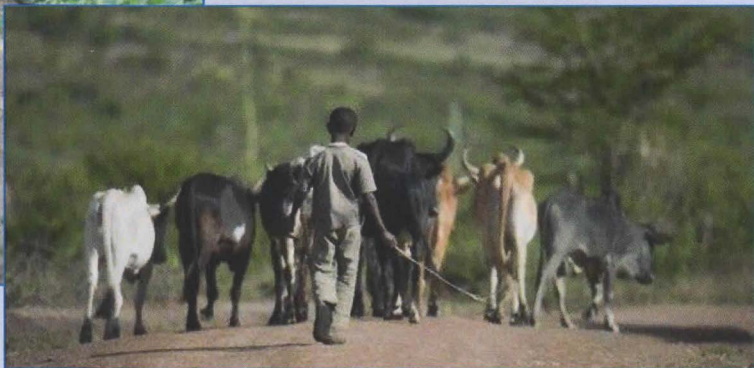
The Marange area is situated in the so called ‘region 5’ where the rainfall patterns are very erratic, averaging around 500mm/annum. When the country experiences droughts, the Marange region suffers most.

The communities under their chiefs or headmen own small fields averaging 5 hectares per family for mainly subsistence agriculture. The main staple crops grown are drought resistant millet (Mhunga, Mapfunde), rapoko and here and there maize. The yields are low.

Alongside the fields the communities also own heads of cattle, not more than 10 per family. The cattle are the communities form of life insurance i. e. the cows are only used when there is a family crisis or an important family event. Programs to save the community heads of cattle have been designed by one of the community members, where each cow is fed 2kgs in the morning and 2kgs in the evening just to let them survive the current drought period.

Small vegetable gardens are widespread in Marange and are usually sited along river banks, causing lots of environmentally unwanted river siltation.

The Marange region is bordered by two big rivers, the Save and its tributary the Odzi river. Despite the exploitive mining activities of the past, underground water is still sufficiently available.

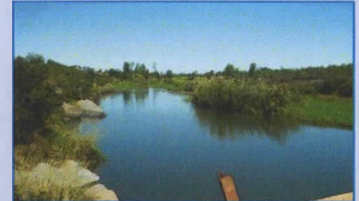






### Objectives of the Agricultural Programs

- providing adequate sources for a continuous water supply in order to meet
  - the drinking water needs of the people and their livestock
  - the needs for an appropriate irrigation of the crop areas/the vegetable gardens
- careful relocation and restructuring of the vegetable gardens presently sited along the rivers, comprising appropriate irrigation systems, in order to avoid siltation of the rivers
- desiltation of the rivers
- change from subsistence agriculture with inconsistent volume and quality, sometimes barely enough for the people themselves, to a market-oriented agriculture (local markets and export)



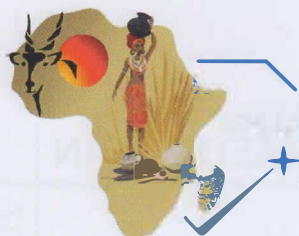
Sufficient and steady water supply is a condition precedent for a flourishing agriculture and for the shift towards market-oriented agricultural activities.

With the establishment of the boreholes in the 156 community villages (see page 10 of the Master Plan) an important step will be done in this respect. With regard to the irrigation of the cropland, a revival of the 'Nyanyadzi Irrigation Scheme' models is envisaged for the entire Marange-Chiadzwa area. Efficient and steady irrigation can be realized by means of systems with solar energy driven pumps. First promising discussions have already taken place with Mäsge Contec and Chi Mats Solar.

As water is a precious resource, especially in regions with very low quantities of rain, like the Marange-Chiadzwa area, it is intended to apply a soil conditioner called 'HiProAqua'.

Intermixing this additive with the soil has several positive effects:

- in the first instance it reduces evaporation and helps the soil to retain the water up to six weeks, thus, irrigation intervals can be extended, which saves water and working time as well
- furthermore, it airs the soil, invigorates the crop and reduces the elution of fertilizers, i. e. the quantity of fertilizer can be reduced, which contributes to the protection of the environment



The change from a solely subsistence agriculture to a more market oriented agriculture, offering the opportunity for employment and a higher standard of living, poses a challenge, to which Red Mercury makes the following approach:

- providing an appropriate and steady water supply and irrigation as described before
- introducing new crops reflecting the demand in local and/or export markets. Two first promising approaches are under discussion:

1) medical herbs

- for use in the clinics and hospitals being built in the Marange-Chiadzwa area as supplement to the conservative pharmaceuticals
- for distribution into local and foreign markets, where a considerable demand for medical herbs can be observed
- in a second step, for value adding, processing and/or packaging herbs according to market demand

Red Mercury has already signed a co-operation contract with DagonMir Natural Health Care Pty, a South African Company, directed by Dr. Sue Schonken, focusing on the research, development and manufacture of natural pharmaceuticals and wellness products. Dr. Sue Schonken has worked with Chief and Engineer Godfrey Marange for many years and can contribute to the Marange project with her profound experience in the field of growing and processing medical herbs. Red Mercury may also benefit from her knowledge about and her contacts in the related national and international markets.

2) flax

is a quickly renewable crop and therefore a very economic raw material and it is highly suited as insulation material in the building industry. It can be used in the modular building construction business to be established in Zimbabwe and the entire African continent (see also page six of this Master Plan).







- opening people's minds for the new chances and assisting them in gaining the knowledge and skills to cope with the new tasks arising
  - ➔ establishing comprehensive information and training programs (co-operation with DEULA e.V., a German association of schools/academies in the field of agricultural engineering)



- seeking support and consultancy of experienced partners in the agricultural sector, e. g. BayWa, a German group with worldwide operations in the core competences of trading, logistics and supplementary services
- providing appropriate equipment, machinery and vehicles, meeting the requirement of large-scale agricultural cultivation (negotiations with the German suppliers CLAAS KGaA mbH, Grimme and RIELA, which also offer training on their products, are in progress )



- detecting new channels of distribution (e. g. discussions with Grossmarkt Hamburg, Germany, a wholesaler offering fresh food from all over the world and again BayWa, also being active in the distribution of fruit, have already been launched)
- furnishing the farmers with the required seeds during the start-up period





## Cultural and Community Services Programs

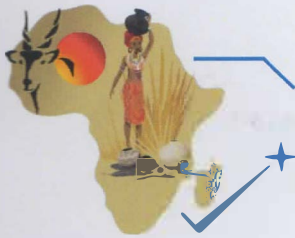
### The Marange Museum



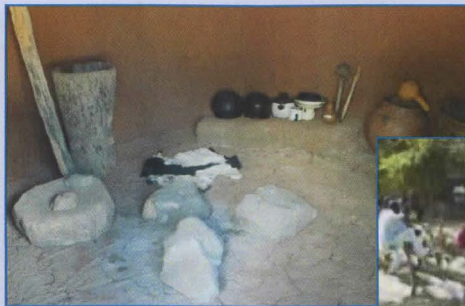
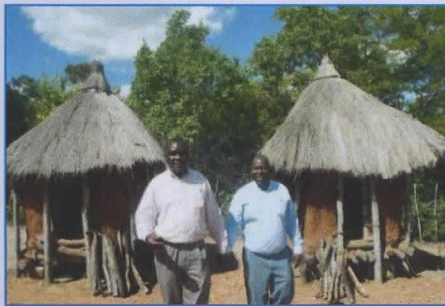
The Marange museum is a local history museum sited at the foot of the religious and cultural heartland of Marange, Mount Makomwe. Fathering this museum was a heartfelt wish of Ishe Rodwell Marange, who has established the museum in his own house, using his own resources and materials locally available. The museum aims at the preservation of and the education on the traditional culture and structures of the Marange community and chieftainship and has developed to be the unifying center for the Marange people.

Inside the rooms of the main building the museum holds photographs, pictures and various regalia and traditional artefacts relating to the Marange chiefly genealogy as well as others, that illustrate the instruments used by traditional doctors and diviners, weddings, children, noted musicians etc. Furthermore it comprises a small village of traditional rondavels for sleeping and kitchen. The museum provides one big as well as several small meeting places and serves as venue for meetings of the traditional leaders, traditional dance festivals and sporting events. The grounds of the museum are full of indigenous trees and plants, many of them endangered, many of them having specific medicinal properties or other social or economic functions. The idea is, not only to encourage their growth and exhibit them, but also to educate local people on their worth and encourage them to conserve and plant them.

The museum, built up with the simple means available in the area, presently has a rather local importance, but shows considerable potential for further development.



Part of the revenues from the Red Mercury mining activities, thus, will be used to support the advancement of the museum and to make it an attraction pole for a national and international audience and a well-respected education center, where young people can acquaint themselves with the traditions and customs of their ancestors.



#### Scheduled Measures

- improvement of the existing structures, expansion of exhibition space and optimizing the presentation of the exhibits
- development of a game and vegetation conservancy
- provision of adequate infrastructure e. g. accommodation roads, electrical power and water, sanitary facilities, accommodation facilities, event facilities
- establishing a professional museum administration/management, allowing a successful operation of the museum with profits in the long run
- staffing the museum with skilled personnel
- public relation and marketing activities
- creating the legal framework for a long-term survival of the museum

In the immediate vicinity of the museum a center for the Royal Marange chieftainship shall arise. It shall comprise a big assembly hall for the meetings of the traditional leaders, as well as accommodation facilities for the chiefs and headmen. It is contemplated to erect a safari lodge-like arrangement, with each dwelling bearing the name of a chief or headman. For the time, when there are no leaders around, the dwellings might be rent out to museum visitors and tourists. The assembly hall might serve as venue for various kinds of events, e. g. traditional dance shows, lectures, religious services etc.

This area close to the museum in future shall also house **the Royal Marange commercial head office** and shall be developed into a center of economic life, attracting people from all over the country. For that purpose experts in 2017 will start a comprehensive town planning in a tract of land of approximately 60 hectares.





### The Marange Musical

Another ambitious cultural project, Red Mercury intends to invest in, is a musical on the eventful history of Zimbabwe and the Royal Marange Clan.

The first Zimbabwean 'Black and White' musical, shall tell to the world the turbulent Zimbabwe story in a perfect marriage of music, song and dance.

It will be written, composed and produced by Mr. Raymond Neo Vilakazi, a South African playwright based in Scotland, in co-operation with David Hepburn-Watson, an award winning musician with more than 15 years of experience, writing for film, animation, stage and computer games.

A respective Memorandum of Understanding has already been signed.

The Marange musical shall be presented on stages all over the world e. g. New York, Los Angeles, Shanghai, Lagos, London, Edinburgh, Beijing, Paris etc.

It will open good job and career opportunities for a large number of young talented African artists and will create considerable revenues via

- sales of tickets, CDs, DVDs, merchandising articles (caps, shirts etc.) , programs
- charges for TV and radio plays
- monies from online sales, music score, TV content.

